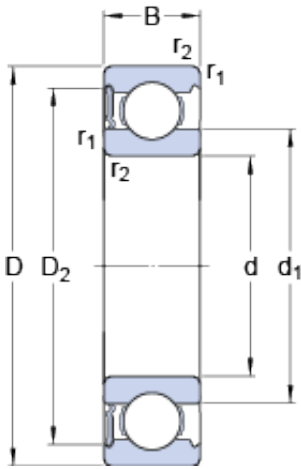




KOYO PRECISION AXLE CORP.



55 mm x 100 mm x 21 mm SKF 6211-RS1 deep groove ball bearings

Bearing No. 6211-RS1

6211-RS1 Bearing 2D drawings and 3D CAD models

Size	100x55x21 mm
Bore Diameter	100 mm
Outer Diameter	55 mm
Width	21 mm
d	55 mm
D	100 mm
B	21 mm
d ₁	69.06 mm
D ₂	89.4 mm
r _{1,2} - min.	1.5 mm
d _a - min.	64 mm
d _a - max.	69 mm
D _a - max.	91 mm
r _a - max.	1.5 mm
Basic dynamic load rating - C	46.2 kN
Basic static load rating - C ₀	29 kN
Fatigue load limit - P _u	1.2 kN
Limiting speed	4300 r/min
Calculation factor - k _r	0.025
Calculation factor - f ₀	14.3
Category	Single Row Ball Bearings
Inventory	0.0
Manufacturer Name	SKF
Minimum Buy Quantity	N/A



KOYO PRECISION AXLE CORP.

Weight / Kilogram	0.628
EAN	7316577738035
Product Group	B00308
Enclosure	1 Seal
Precision Class	ABEC 1 ISO P0
Maximum Capacity / Filling Slot	No
Rolling Element	Ball Bearing
Snap Ring	No
Internal Special Features	No
Cage Material	Steel
Enclosure Type	Contact Seal
Internal Clearance	C0-Medium
Inch - Metric	Metric
Long Description	55MM Bore; 100MM Outside Diameter; 21MM Outer Race Width; 1 Seal; Ball Bearing; ABEC 1 ISO P0; No Filling Slot; No Snap Ring; No Internal Special Features; C0-Medium Internal Clearance; Steel Cage;
Other Features	Deep Groove NBR Seal
Category	Single Row Ball Bearing
UNSPSC	31171504
Harmonized Tariff Code	8482.10.50.68
Noun	Bearing
Keyword String	Ball
Manufacturer URL	http://www.skf.com
Manufacturer Item Number	6211-RS1
Weight / LBS	1.3842
Outside Diameter	3.937 Inch 100 Millimeter
Bore	2.165 Inch 55 Millimeter
Inner Race Width	0 Inch 0 Millimeter



KOYO PRECISION AXLE CORP.

Outer Race Width	0.827 Inch 21 Millimeter
d_1	69.06 mm
D_2	89.4 mm
$r_{1,2}$ min.	1.5 mm
d_a min.	64 mm
d_a max.	69 mm
D_a max.	91 mm
r_a max.	1.5 mm
Basic dynamic load rating C	46.2 kN
Basic static load rating C_0	29 kN
Fatigue load limit P_u	1.25 kN
Calculation factor k_r	0.025
Calculation factor f_0	14.3
Mass bearing	0.62 kg