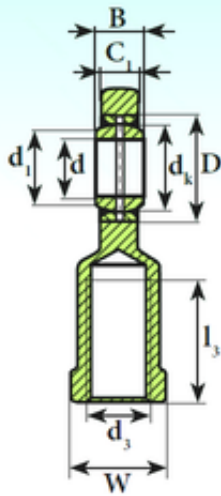




KOYO PRECISION AXLE CORP.



50 mm x 75 mm x 35 mm ISB SI 50 ES 2RS plain bearings

Bearing No. SI 50 ES 2RS

Size	50x75x35 mm
Bore Diameter	50 mm
Outer Diameter	75 mm
Width	35 mm
d	50 mm
D	75 mm
B	35 mm
d1	56 mm
d2	112 mm
d4	62 mm
dk	66 mm
h1	160 mm
l3 min.	69 mm
l4 max.	216 mm
l5	20 mm
l7 min.	59 mm
r min.	0,6 mm
C1	30 mm
W	65 mm
Thread (G)	M45x3
Angle	6 °
d5	75 r/min
Weight	3,5 Kg
Basic dynamic load rating (C)	156 kN

SI 50 ES 2RS Bearing 2D drawings and 3D CAD models